



Basica Cond

PRE-MIXED CONDENSING BOILER

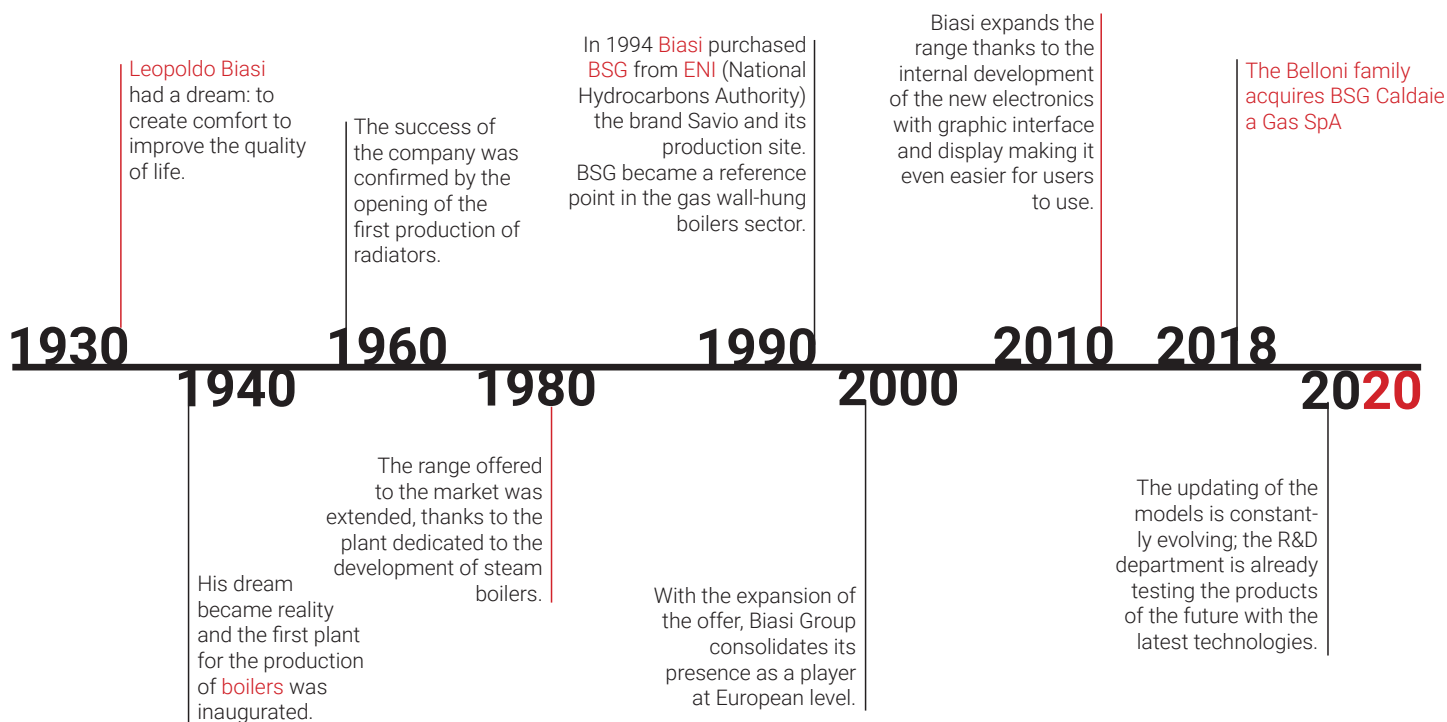


OUR COMPANY

Biasi engages the experience, skills, organization and patents of a company history that started in the 1930s and developed to become an industry professional. For over 80 years we have been operating in the heating industry, investing in Italy and abroad looking for solutions for comfort in the domestic and professional industries. Today our offer covers all market segments: from wall-hung to floor-standing condensing boilers, water heaters, a wide range of integrated systems with solar based on high energy efficiency. It also supplies new complete systems with heat pumps and hybrids, which can be integrated with radiant solutions, operating at low temperatures.



OUR HISTORY



QUALITY

TECNOLOGY AND RELIABILITY

RESEARCH AND INNOVATION

ITALIAN DESIGN

COSTUMER CARE

FLEXIBILITY

STRUCTURED LOGISTIC

We constantly design and improve our products. We assemble them in our assembly lines, we check the quality at each step of the process. **The value of Made in Italy is in every detail.**



Our wall hung boilers' factory is equipped to:

- produce up to 160,000 boilers per year;
- produce 500 different part numbers;
- produce more than 16 product ranges,

OUR PRODUCTS

RESIDENTIAL

Condensing boilers

Traditional boilers

Hybrid systems

Heat pumps

Water heaters

Air conditioning

Solar panels

Boilers

Integrated systems with solar

PROFESSIONAL

Boilers for centralized systems

SPARE PARTS

Condensing boiler



Basica Cond

- ↑ ↓ MODULATION 1:5
- ⚡ 25-30 kW
- 🔥 HEATING WATER
- 🚰 DOMESTIC WATER
- 👑 14,7 ÷ 17,6 L/min
Domestic hot water production
- 🔥 NATURAL GAS / LPG



NOx 6
CLASS



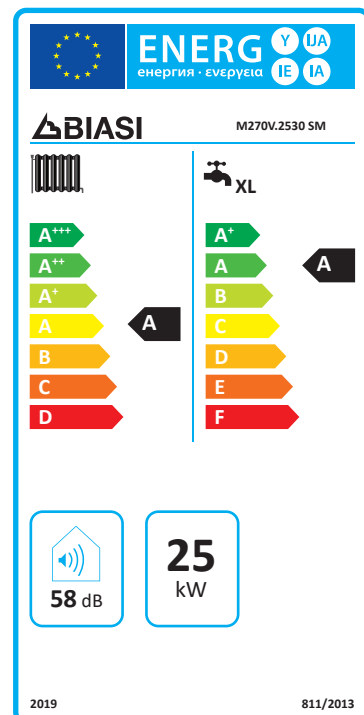
WI-FI
READY

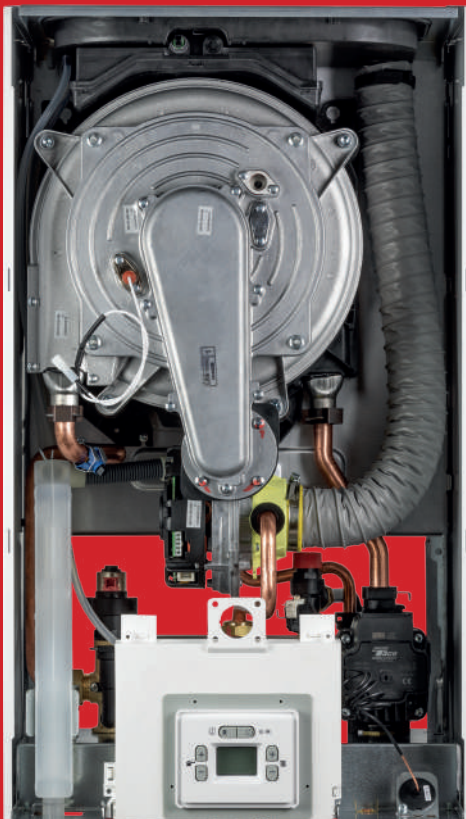
Basica Cond

Basica Cond completes the BIASI **condensing pre-mixed range**: perfect for under-floor systems and for radiant systems with mixing units.

Basica is the **compact** condensing boiler that guarantees high efficiency, low consumption and respect for the environment.

Available to produce domestic hot water and heating and in power ranges of **25 and 30 kw**.





Main features:

Primary condensing exchanger in stainless steel with aluminium coating to offer maximum resistance to corrosion

Burner with total premixing, manufactured in stainless steel (NOx class 6)

Modulation 1:5 Natural Gas and LPG

DHW exchanger with stainless steel plates

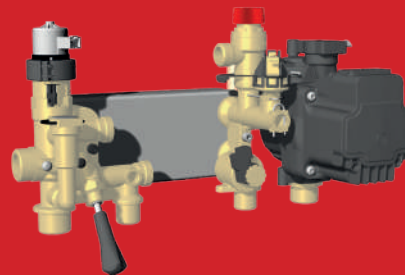
8-litre expansion vessel

High efficiency pump with low energy consumption

Integration with BIASI solar system by means of solar kit

Analogical pressure reading

Set up for remote control and external probe



Brass compact hydraulic group. Inlet unit with motorised valve, integrated bypass and filling valve of the system. ERP circulator with manual pump release in the return group.



Boiler control panel



Base remote control



Top remote control

Control Panel

Winter/Summer/Off selector

Heating temperature regulator

DHW temperature regulator

Digital pressure reading (reads on pressure gauge of the boiler)

Screen display of DHW and heating temperature

Display of fault diagnostics, lockout conditions and fault log

The display works according to the following modes:

- 1. INFO** - available information referred to the operating status and failure data
- 2. OFF PROGRAMMING** - Programmable parameters for generator / installation and user SET
- 3. INSTALLER PROGRAMMING** - Generator parameters
- 4. SERVICE PROGRAMMING** - Parameters for authorized service centres.

Remote controls

Basica Cond range offers **2 remote controls of Class V**, in a Basic and Top version with weekly timer thermostat control up to 4 programmable periods with independent temperatures, in addition to the remote of all the information of the boiler display.

Technical data

Technical data

Basica Cond

		25S	30S
Nominal heating/d.h.w. heat input	kW	21.0/26,0	26,0/31,0
Minimum heat/ d.h.w input	kW	5,1	6,2
Output power for heating/d.h.w. 60°/80° C *	kW	20,5/25,4	25,4/30,3
Minimum output power for heating/d.h.w 60/80° C **	kW	4,8	5,8
Output power for heating/d.h.w. 30°/50° C	kW	22,4/27,8	27,9/33,3
Minimum output power for heating/d.h.w 30°/50° C	kW	5,3	6,5
Quantity of drain to Q.nom 30°/50° C (in heating)	l/h	4,2	4,8
Quality of drain to Q.nom 30°/50° C (in heating)	l/h	0,8	1,2
Ph of condensation		4,0	4,0
Efficiency at nominal input 60°/80° C *	%	97,7	97,8
Efficiency at minimum input 60°/80° C **	%	93,5	93,4
Efficiency at nominal input 30°/50C **	%	106,8	107,3
Efficiency at minimum input 30°/50C **	%	103,9	104,6
Efficiency at 30% load *	%		
Efficiency at 30% load **	%	107,5	107,9
Efficiency electric		★★★★	★★★★
Heat loss at the chimney with burner on	Pf (%)	1,8	1,7
Heat loss at the chimney with burner off $\Delta t = 50^\circ$	Pfbs (%)	0,2	0,2
Heat loss towards the environment through the casing with the burner operating	Pd (%)	1,6	0,9
Class NOx	n°	6	6
Weighted NOx ***	mg/kWh	43	35
Minimum/maximum heating temperature	°C	27-80	27-80
Minimum/maximum heating pressure	bar	0,3-3	0,3-3
Pressure Available	bar	0,385	0,385
Total capacity of the expansion tank	l	8	8
Minimum/ maximum d.h.w. temperature	°C	35-60	35-60
Minimum/ maximum d.h.w pressure	bar	0,3-10	0,3-10
Maximum flow rate ($\Delta t = 25$ K) / ($\Delta t = 35$ K)	l/min	14,7-10,3	17,6-12,3
Specific d.h.w flow ($\Delta t = 30$ K) *****	l/min	12,4	14,9
Voltage / electric power at nominal heat input	V~/ W	230~/99	230~/101
Electric power at minimum heat input	W	12,6	11,6
Electric power in stand-by	W	3,3	3,3
Electric degree of protection	n°	IPX5D	IPX5D
Max flue gas temperature	°C	50/69	45/73
Max / min exhaust gas mass flow rate	kg/s	0,0027/0,0118	0,0039/0,0136
Max / min air mass flow rate	kg/s	0,0026/0,0113	0,0038/0,0130
Max. coaxial flue gas discharge length	m	10,0/10,0	10,0/10,0
Max twin flue pipe gas discharge length	m	40,0	40,0
Height x Width x Depth	mm	703x400x325	703x400x235
Weight	kg	30,0	31,5
Water contained in the boiler	l	2,0	2,0
Fuel			Methane (G20) - Propane (G31)

* With return water temperatures that do not allow condensation. ** With return water temperatures that allow condensation. *** With coaxial flue gas outlet 60/100 L 0,9 m and NATURAL GAS G20. **** At minimum useful power. ***** Referred to EN 625 standard. # Values referred to tests with split exhaust 80 mm 1 + 1 and natural gas G20. * With return water temperatures that do not allow condensation. ** With return water temperatures that allow condensation. *** With coaxial flue gas outlet 60/100 L 0,9 m and natural gas G20. **** At minimum useful power. ***** Referred to EN 625 standard. # Values referred to the tests with split exhaust 80 mm 1 + 1 and natural gas G20.



Cod. 4823.0718.00



Headquarters and Production
Legal office: Via Pradolton, 1/b - 33170 Pordenone (Italy)
Tel. +39 0434 238311 - Fax +39 0434 238312



www.biasi.it